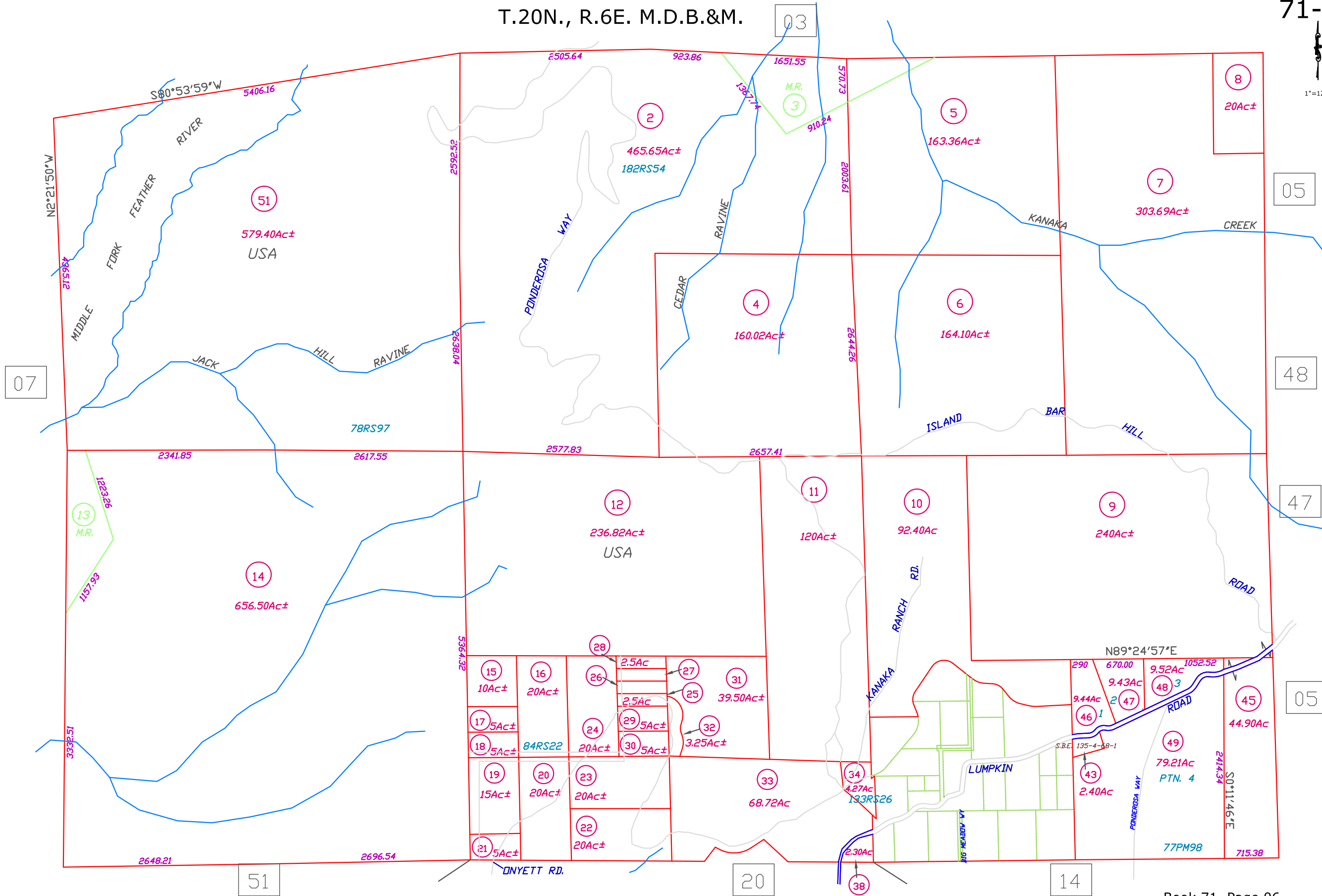


1"=1200'

All Assessor's maps are prepared for local property assessment purposes ONLY. Parcels shown thereon may not comply with State and local subdivision ordinances. No liability is assumed for the accuracy of the Assessor's map. ALL ACRES ARE APPROXIMATE PER RECORDED INFORMATION.



Created by:	DB	Created on:	02-09-2011
Revised by:	SL	Revised on:	04-15-2015
		Effective roll:	2016-17
Previous Book 37, Page 10			